



HYUNDAI POSITIONER



Arc Welding Positioner HAP1 – 250/500/1000

HAP2 – 250/500/700

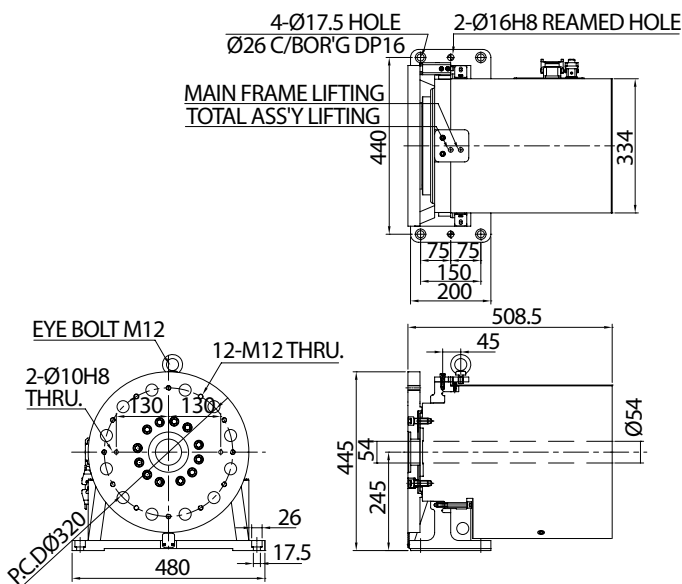


1-Axis
Payload 250 kg
500 kg
1,000 kg

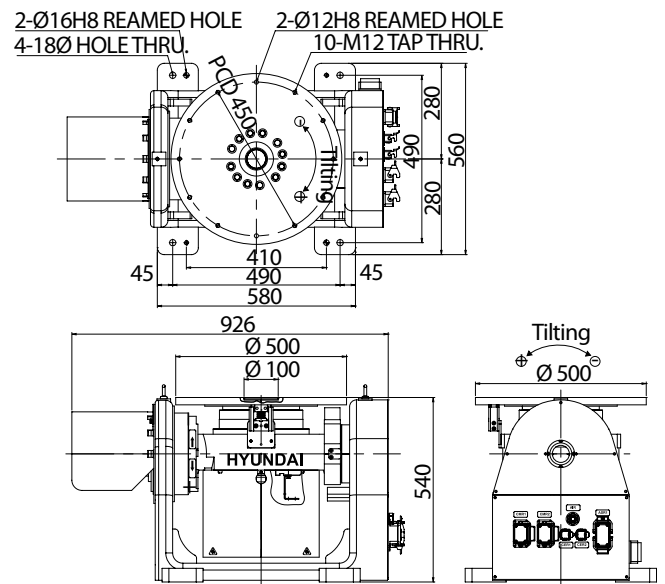


2-Axis
Payload 250 kg
500 kg
700 kg

Dimension **HAP1-500**



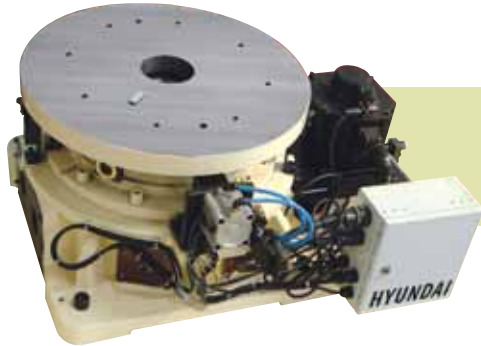
Dimension **HAP2-500**



Specifications

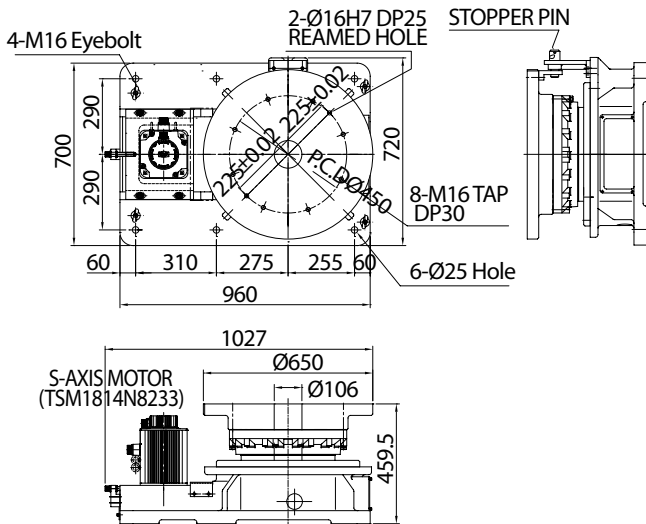
Model		HAP1-250	HAP1-500	HAP1-1000
Payload		250 kg	500 kg	1,000 kg
Degree of Freedom		1 Axis	1 Axis	1 Axis
Range of Motion	Rotation 1	±360°	±360°	±180°
	Rotation 2	-	-	-
Max. Speed	Rotation 1	115 %/s	115 %/s	80 %/s
	Rotation 2	-	-	-
Allowable Moment		19 kgf.m	51 kgf.m	245 kgf.m
Allowable Moment Inertia		7.7 kg.m ²	35 kg.m ²	200 kg.m ²
Repeatability		±0.1 mm	±0.1 mm	±0.2 mm
Approximate Weight		126 kg	130 kg	230 kg
Ambient Temperature		0 ~ 45°C(273 ~318K)		
Robot Controller		Hi5		
Color		Ivory (Standard)		
Remarks		Endless rotation is available as an option		

Spot Welding Positioner HSP1-2500/5000

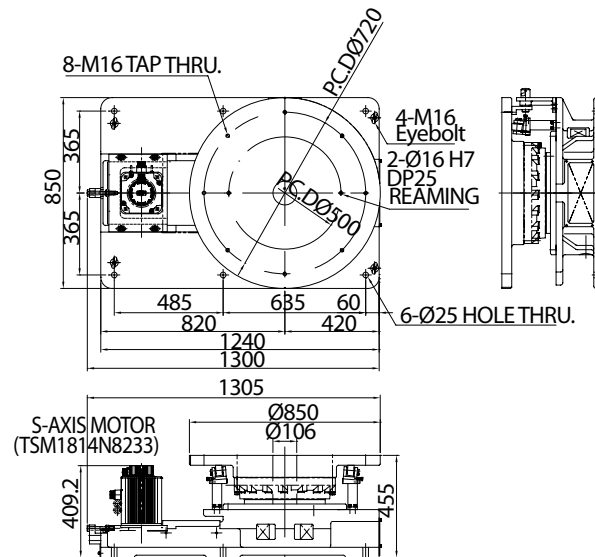


1-Axis
Payload 2,500 kg
5,000 kg

Dimension HSP1-2500



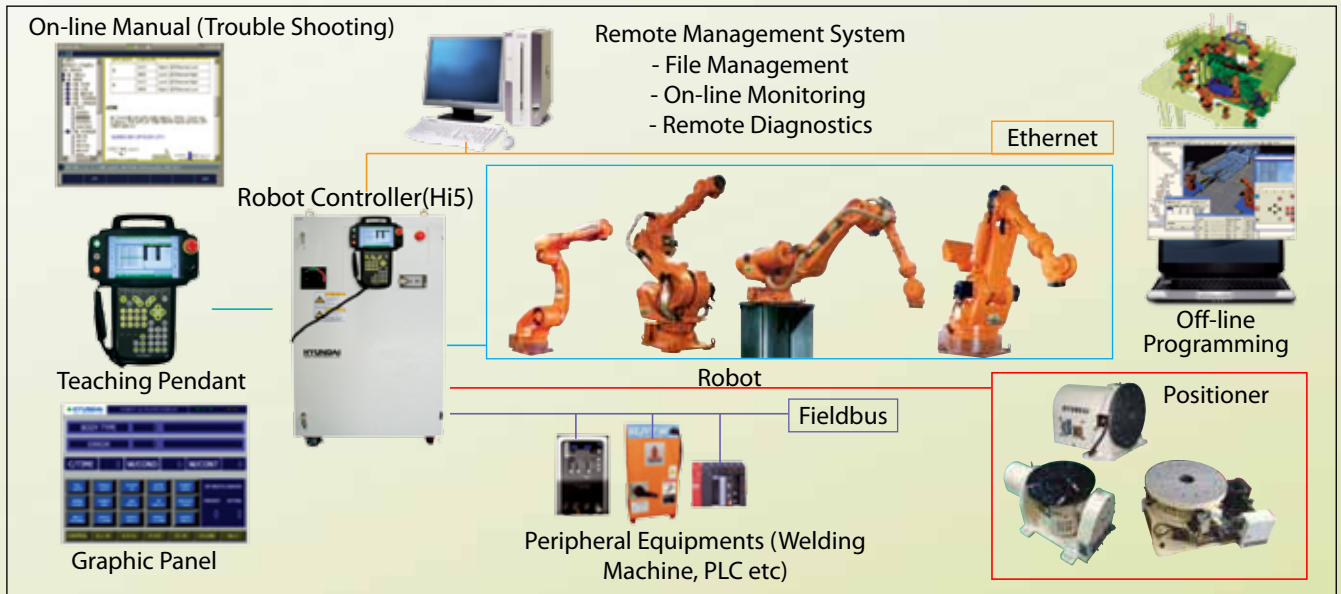
Dimension HSP1-5000



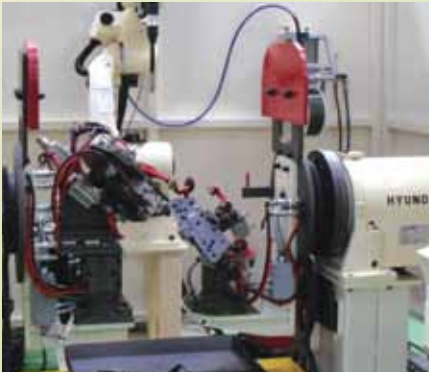
※ Note : We can change above all specifications according to customer demand conditions without any notice.
For more information on models with different dimensions, please contact our HHI representative.

HAP2-250	HAP2-500	HAP2-700	HSP1-2500	HSP1-5000
250 kg	500 kg	700 kg	2,500 kg	5,000 kg
2 Axes	2 Axes	2 Axes	1 Axes	1 Axes
±135 °	±135 °	±90 °	±360 °	±360 °
±200 °	±200 °	±200 °	-	-
100 °/s	100 °/s	75 °/s	80 °/s	60 °/s
115 °/s	115 °/s	105 °/s	-	-
19 kgf.m	39 kgf.m	68 kgf.m	320 kgf.m	356 kgf.m
19 kg.m ²	35 kg.m ²	70 kg.m ²	2,940 kg.m ²	6,500 kg.m ²
±0.1 mm	±0.1 mm	±0.1 mm	±0.2 mm	±0.2 mm
270 kg	290 kg	380 kg	650 kg	950 kg
0 ~ 45°C(273 ~318K)			0 ~ 45°C(273 ~318K)	
Hi5			Hi5	
Ivory (Standard)			Ivory (Standard)	
Endless rotation is available as an option			For safely, a lock mechanism is provided at 0°, 90°, 180° and 270°.	

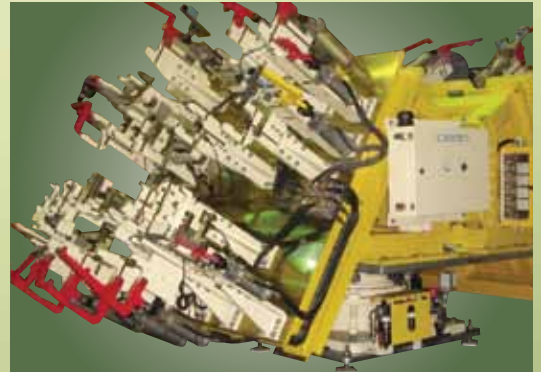
System Configuration



Applications



Arc Welding



Spot Welding

Korea

Head Office

1000 Bangeojin sunhwan-doro, Dong-gu, Ulsan, Korea
TEL : +82 52 202 7901/6233 / FAX : +82 52 202 7900
E-mail: machinery@hhi.co.kr

Seoul Office

140-2, Gye-dong, Jongno-gu, Seoul
TEL : +82 2 746-4713 / FAX : +82 2 746 4720

Ansan Office

1431-2, Sa-dong, Sangnok-gu, Ansan-si, Gyeonggi-do
TEL : +82 31 409 4945 / FAX : +82 31 409 4946

Cheonan Office

355-15, Daga-dong, Cheonan-si, Chungcheongnam-do
TEL : +82 41 576 4294 / FAX : +82 41 576 4296

Daegu Office

223-5, Beomeo 2-dong, Suseong-gu, Daegu
TEL : +82 53 746 6232~3 / FAX : +82 53 746 6231

Gwangju Office

415-2, Nongseong-dong, Seo-gu, Gwangju
TEL : +82 62 363 5272 / FAX : +82 62 363 5273

Overseas

Chicago, U.S.A

955 Estes Avenue, Elk Grove Village IL
60007, U.S.A
TEL : +1 800 423 8721
FAX : +1 847 437 3574

Houston, U.S.A

1400 Broadfield, Suite 110, Park 10 Center
Houston, Texas 77084, U.S.A
TEL : +1 281 578 7097
FAX : +1 281 578 8317

London, U.K

2nd Floor, The Triangle 5-17,
Hammersmith Grove London W6 0LG, U.K
TEL : +44 20 8741 0501
FAX : +44 20 8741 5620/8834 7281

Rotterdam, Netherland

Folkert Elsingastraat 7
3067 NW, Rotterdam, The Netherland
TEL : +31 10 212 1567
FAX : +31 10 212 5134

Shanghai, China

Room 2305, North Tower, Shanghai Stock
Exchange Building, #528, South Pudong
Road, Shanghai, China(200120)
TEL : +86 21 6880 0808*235
FAX: +86 21 6880 0608

Beijing, China

Beijing Hyundai Jingcheng
No. 2. Nanli, Luguoqiao
Fengtai District, Beijing, China
TEL : +86 10 8321 2588
FAX : +86 10 8321 2188

Mumbai, India

5th Floor, East Quadrant, The IL & FS
Financial Centre Plot no. C-22, G-Block,
Bandra-Kurla Complex Bandra (E), Mumbai
400-051, India
TEL : +91 22 2653 3420~26
FAX : +91 22 2653 3429~30