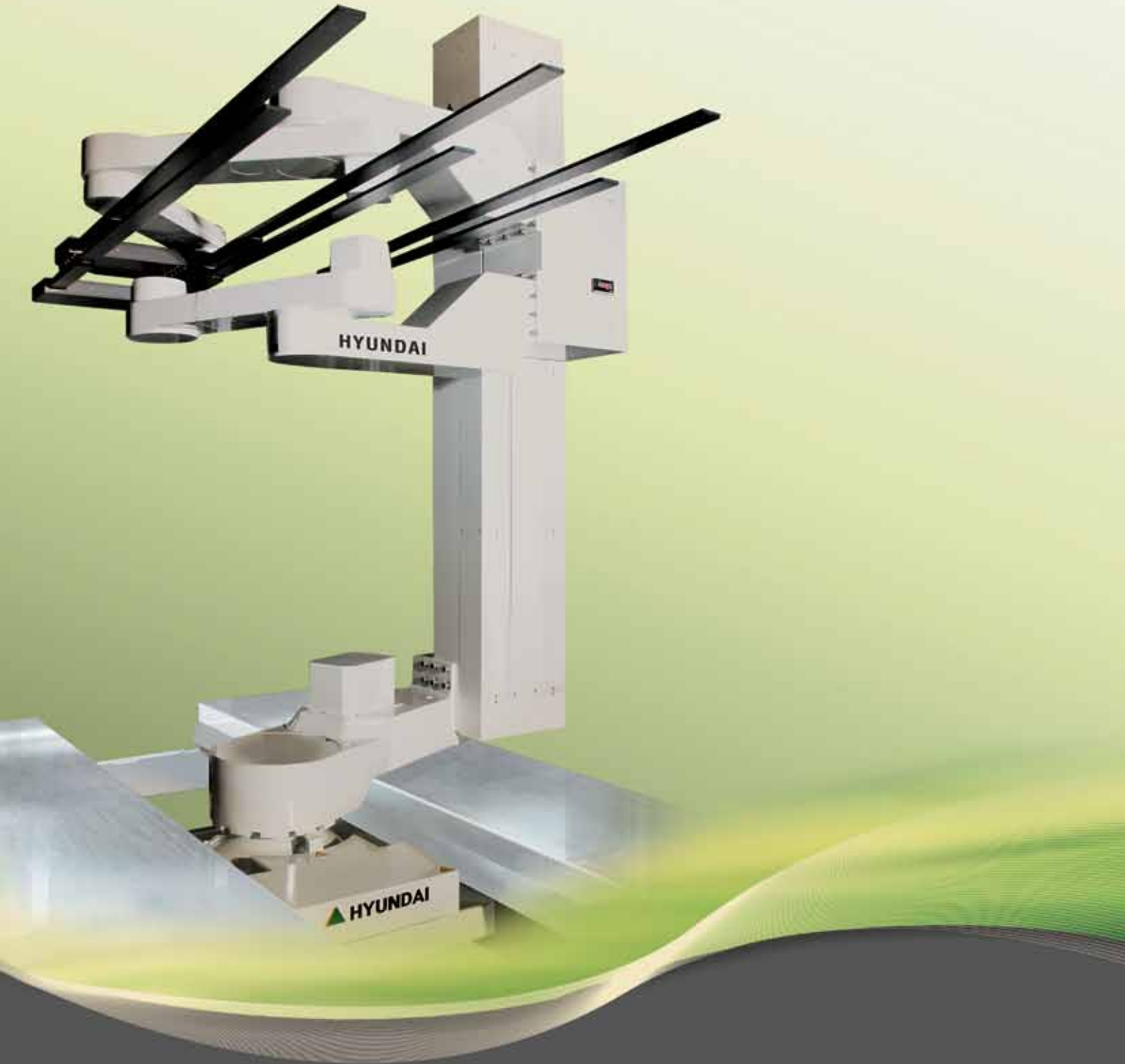


HYUNDAI LCD ROBOT



Cylindrical Type Glass Robot HC1300CD

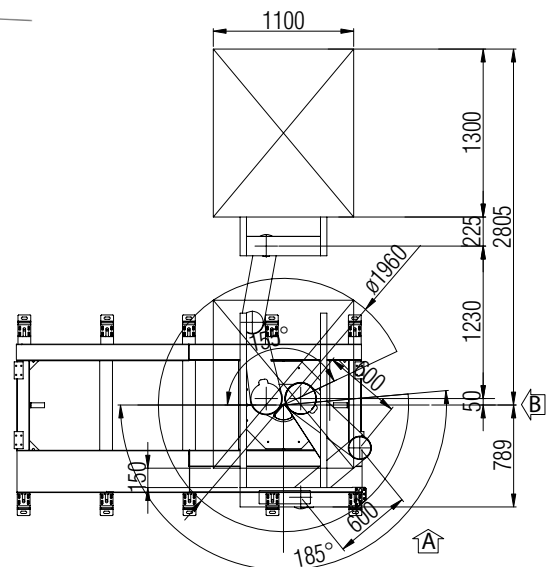


Manipulator Specifications

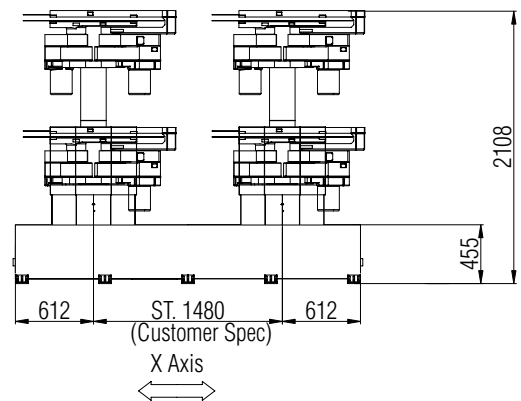
Item	Specification	
Model	HC1300CD	
Generation	5G	
Structure	Cylindrical Type	
Degree of Freedom	5 Axes	
Payload	15 kgf/arm (including Hand)	
Driving Method	AC Servo Motor	
Range of Motion	X Axis	More Than 500 mm (Customer Spec.)
	S Axis	-155° ~ +185°
	Z Axis	900 mm
	AU Axis	-714 mm ~ +1,230 mm
	AL Axis	-714 mm ~ +1,230 mm
Max. Speed	X Axis	2,300 mm/s
	S Axis	155°/s
	Z Axis	910 mm/s
	AU Axis	3,876 mm/s
	AL Axis	3,876 mm/s
Repeatability	±0.2 mm	
Clean Class	10	
Weight (Except Traverse Base)	480 kgf	
Color	White	
Ambient Condition	Temperature	0 ~ 40°C (273 ~ 318 K)
	Humidity	20% ~ 80% RH
	Vibration	0.5G or less

※ Above specifications are non-standard, for reference only.
We can change above all specifications according to the customer demand conditions without any notice.

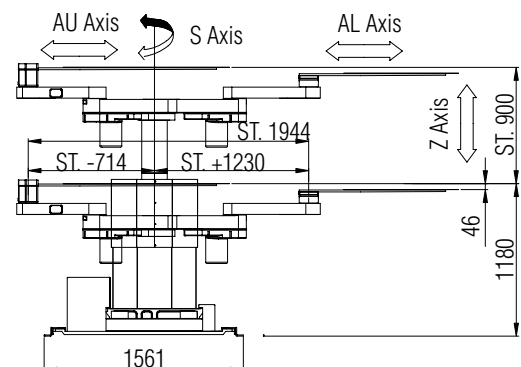
Working Envelope



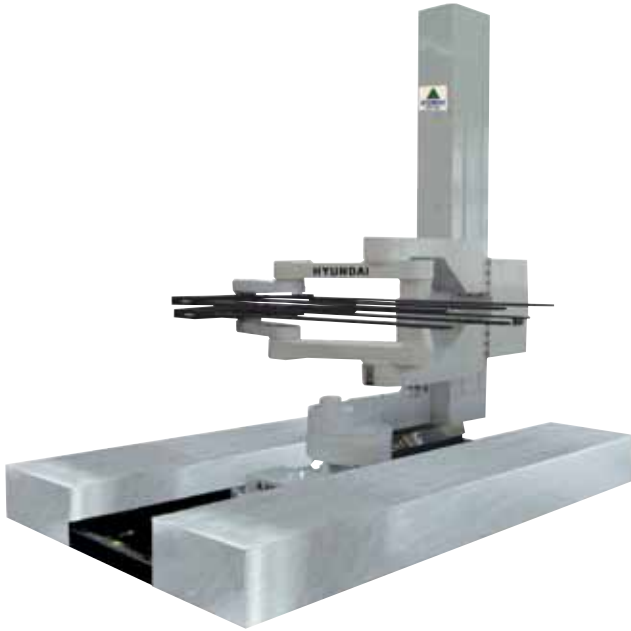
View "A"



View "B"

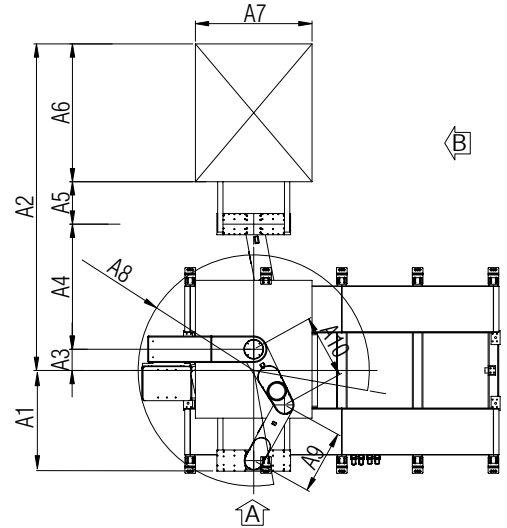


Beam Type Glass Robot HC1300BD, HC1500BD, HC1850BD



Working Envelope

Model	HC1300BD	HC1500BD	HC1850BD
A1	900	1100	1328
A2	3080	3450	3750
A3	200	200	100
A4	1180	1200	1250
A5	400	560	550
A6	1300	1500	1850
A7	1100	1320	1500
A8	R1090	R1240	R1980
A9	600	615	750
A10	600	615	750



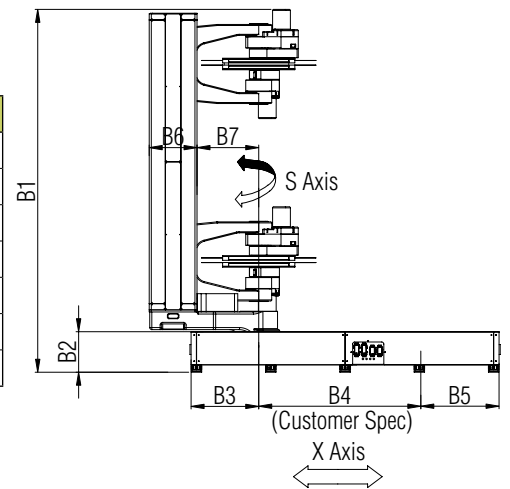
Manipulator Specifications

Item		Specification		
Model		HC1300BD	HC1500BD	HC1850BD
Generation		5G	5.5G	6G
Structure		Beam Type		
Degree of Freedom		5 Axes		
Payload		15 kgf/arm	30 kgf/arm	45 kgf/arm
Driving Method		AC Servo Motor		
Range of Motion	X Axis	More Than 500 mm (Customer Spec.)		
	S Axis	-135° ~ +185°		
	Z Axis	1,900 mm	1,700 mm	1,780 mm
	AU Axis	±1,180 mm	±1,200 mm	±1,210 mm
	AL Axis	±1,180 mm	±1,200 mm	±1,210 mm
Max. Speed	X Axis	2,300 mm/s	2,000 mm/s	2,000 mm/s
	S Axis	155 %/s	180 %/s	125 %/s
	Z Axis	800 mm/s	900 mm/s	900 mm/s
	AU Axis	3,240 mm/s	4,000 mm/s	3,400 mm/s
	AL Axis	3,240 mm/s	4,000 mm/s	3,400 mm/s
Repeatability		±0.2 mm		
Clean Class		10		
Weight (Except Traverse Base)		480 kgf	780 kgf	1,100 kgf
Color		White		
Ambient Condition	Temperature	0 ~ 40 °C (273 ~ 318 K)		
	Humidity	20% ~ 80% RH		
	Vibration	0.5G or less		

※ Above specifications are non-standard, for reference only.
We can change above all specifications according to the customer demand conditions without any notice.

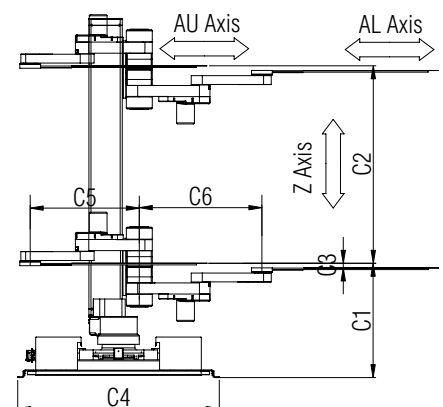
View "A"

Model	HC1300BD	HC1500BD	HC1850BD
B1	3492	3065	3576
B2	390	415	556
B3	651	660	627
B4	ST.500	ST.500	ST.500
B5	651	660	627
B6	400	400	497
B7	594	785	800



View "B"

Model	HC1300BD	HC1500BD	HC1850BD
C1	1100	1020	1330
C2	ST.1900	ST.1700	ST.1780
C3	45	63	78
C4	1940	2060	2130
C5	ST.-1180	ST.-1200	ST.-1210
C6	ST.+1180	ST.+1200	ST.+1210



Beam Type Glass Robot HC2500BD

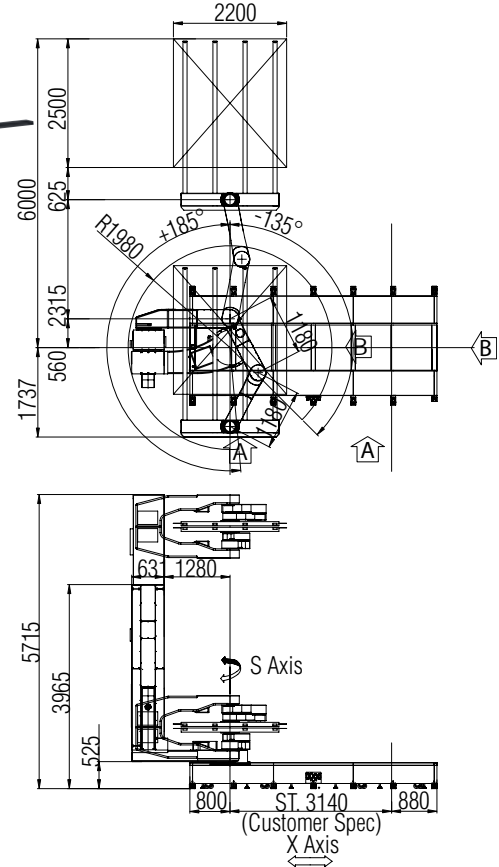


Manipulator Specifications

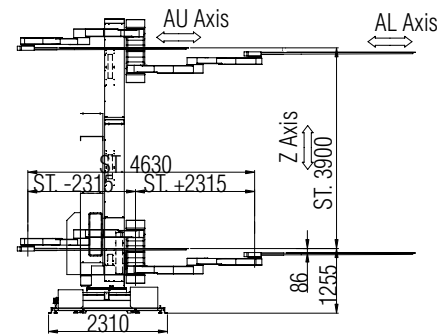
Item	Specification	
Model	HC2500BD	
Generation	8G	
Structure	Beam Type (1 Stroke)	Beam Type (2 Stroke)
Degree of Freedom	5 Axes	6 Axes
Payload	75 kgf/arm (including Hand)	
Driving Method	AC Servo Motor	
Range of Motion	X Axis	More Than 500 mm (Customer Spec.)
	S Axis	-135° ~ +185°
	Z Axis	1,700 mm 3,900 mm
	AU Axis	-2,315 mm ~ 2,315 mm
	AL Axis	-2,315 mm ~ 2,315 mm
Max. Speed	X Axis	2,000 mm/s
	S Axis	95 °/s
	Z Axis	800 mm/s 1,100 mm/s
	AU Axis	4,341 mm/s
	AL Axis	4,341 mm/s
Repeatability	±0.2 mm	
Clean Class	10	
Weight (Except Traverse Base)	3,100 kgf	3,850 kgf
Color	White	
Ambient Condition	Temperature	0 ~ 40 °C (273 ~ 318 K)
	Humidity	20% ~ 80% RH
	Vibration	0.5G or less

※ Above specifications are non-standard, for reference only.
We can change above all specifications according to the customer demand conditions without any notice.

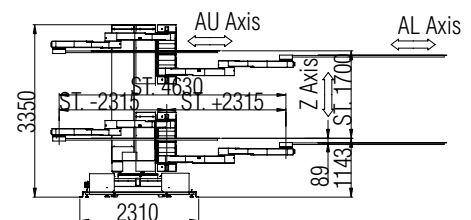
Working Envelope



View "B" 2 Stroke Beam Type



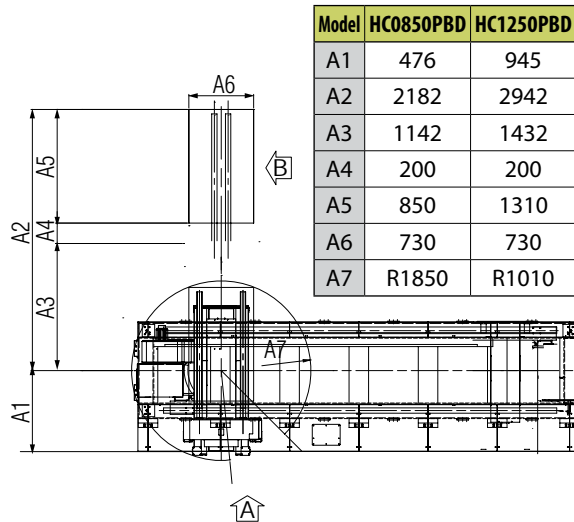
View "A" 1 Stroke Beam Type



Beam Type Panel Robot HC0850PBD, HC1250PBD



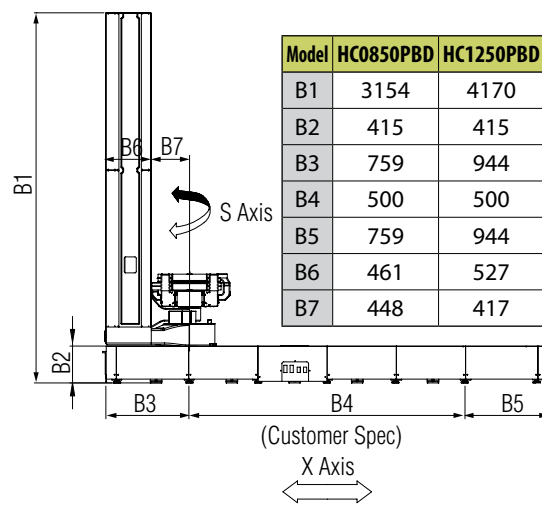
Working Envelope



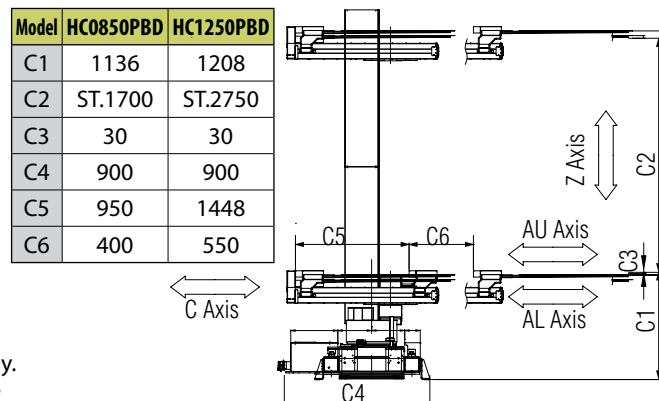
Manipulator Specifications

Item		Specification	
Model	HC0850PBD	HC1250PBD	
Generation	6G	8G	
Structure	Beam Type		
Degree of Freedom	6 Axes		
Payload	15 kgf/arm	18 kgf/arm	
Driving Method	AC Servo Motor		
Range of Motion	X Axis	More Than 500 mm (Customer Spec.)	
	S Axis	-100° ~ +185°	-145° ~ +185°
	Z Axis	1,700 mm	2,750 mm
	C Axis	0~+400 mm	0~+558 mm
	AU Axis	0~+950 mm	0~+1448 mm
	AL Axis	0~+950 mm	0~+1448 mm
Max. Speed	X Axis	2,000 mm/s	
	S Axis	120°/s	
	Z Axis	1200 mm/s	
	Zc Axis	1000 mm/s	
	AU Axis	2,000 mm/s	
	AL Axis	2,000 mm/s	
Repeatability	±0.2 mm		
Clean Class	10		
Weight (Except Traverse Base)	1,600 kg		
Color	White		
Ambient Condition	Temperature	0~40°C(273~318 K)	
	Humidity	30% ~ 90% RH	
	Vibration	0.5G or less	

View "A"



View "B"



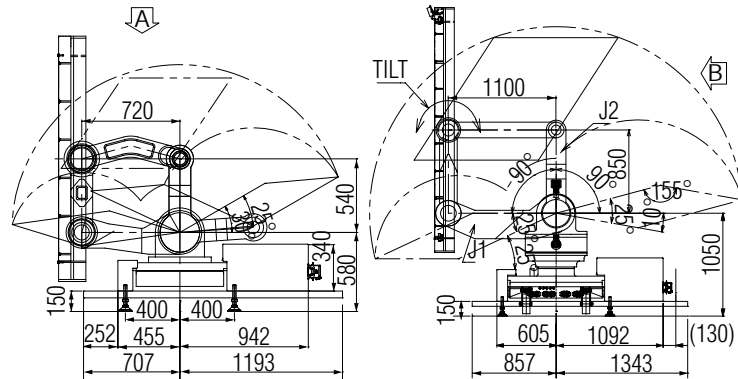
※ Above specifications are non-standard, for reference only.
We can change above all specifications according to the customer demand conditions without any notice.

Glass Inspection Robot HC1850KI, HC2500KI

Working Envelope

HC1850KI

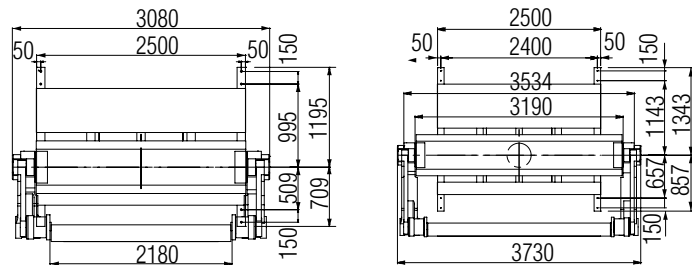
HC2500KI



View "A"

HC1850KI

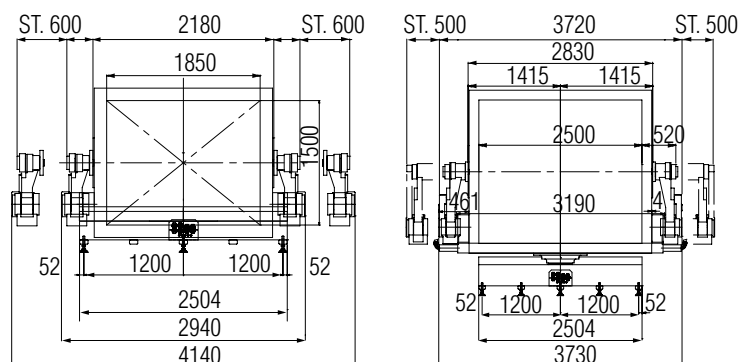
HC2500KI



View "B"

HC1850KI

HC2500KI

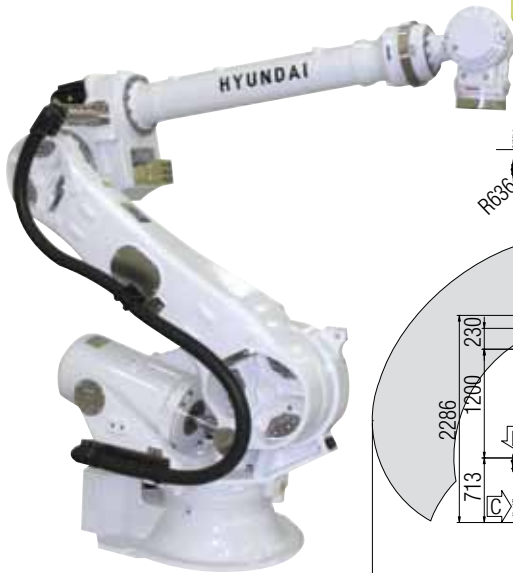


Manipulator Specifications

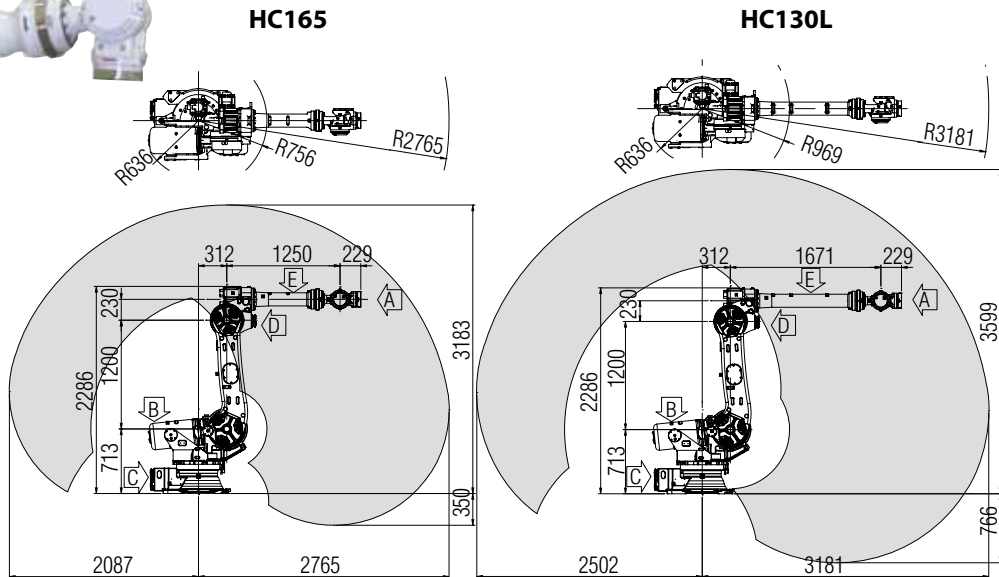
Item		Specification	
Model		HC1850KI	HC2500KI
Generation		6G	8G
Structure		Dual Link	
Degree of Freedom		4 Axes	5 Axes
Payload		200 kgf	300 kgf
Driving Method		AC Servo Motor	
Working Range	X Axis	±600 mm	±500 mm
	S Axis	-	±20°
	J2 Axis	17°~175°	
	T Axis	±140°	
Max. Speed	X Axis	500 mm/s	
	S Axis	-	20°/s
	J1 Axis	50°/s	
	J2 Axis	50°/s	
T Axis	60°/s		
Repeatability		±0.5 mm	
Clean Class		10	10
Weight (Except Traverse Base)		2,800 kgf	3,500 kgf
Color		Black	
Ambient Condition	Temperature	0~40°C (273~318 K)	
	Humidity	20% ~ 80% RH	
	Vibration	0.5G or less	

※ Above specifications are non-standard, for reference only. We can change above all specifications according to the customer demand conditions without any notice.

General Type Handling Robot HC165, HC130L



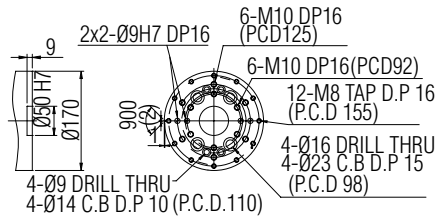
Working Envelope



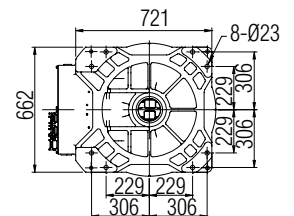
Manipulator Specifications

Item		Specification	
Model		HC165	HC130L
Payload		165 kg	130 kg
Structure		Articulated	
Degree of freedom		6 Axes	
Max. Motion Range	S Swivel	±180°	
	H For/Backward	+10°~+160°	
	V Up/Downward	-80°~+185°	
	R2 Rotation 2	±360°	
	B Bending	±130°	
	R1 Rotation 1	±360°	
Max. Speed	S Swivel	110°/s	
	H For/Backward	92°/s	
	V Up/Downward	105°/s	
	R2 Rotation 2	155°/s	
	B Bending	150°/s	
	R1 Rotation 1	240°/s	
Wrist Torque	R2 Rotation 2	105 kgf.m	
	B Bending	105 kgf.m	
	R1 Rotation 1	50 kgf.m	
Repeatability		±0.2 mm	
Clean Class		10	
Weight (Except Traverse Base)		1,300 kg	1,320 kg
Color		White	
Temperature		0~40 °C (273~318 K)	

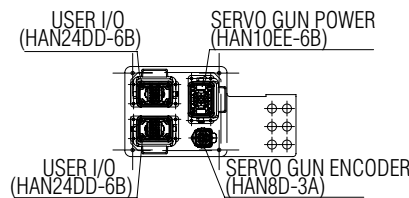
View "A" For Tool Attachment



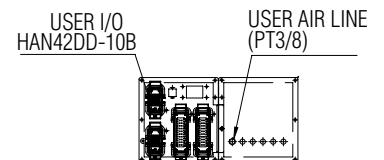
View "B" For Installation



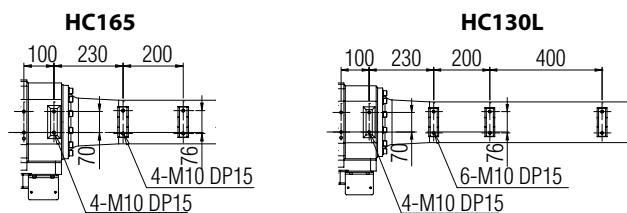
View "C" For User Application



View "D" For User Application



View "E" For Cable Guide



■ Controller Specifications

Item	Specification	
Model Name	Hi5	
Control Hardware	Multi Processor System	
Execution Mode	Teaching & Playback	
Interpolation Type	Point-to-Point, Linear, Circular	
Max. Axes	Max. 16 Axes Simultaneously	
Number of Step	17,000 Points	
External Program Selection	Binary 255 / Discrete 8	
Position Detector	Serial Absolute Encoder	
Program Back-up	USB Memory	
Servo Control	Full Digital Servo	
Digital Input / Output	Max. Input : 256 / Output : 256 Points	
Analog Input / Output	Input : 8 ch / Output : 8 ch	
Conveyor Pulse Counter	Differential Input / Open Collector Input, 2ch	
Communication	Ethernet	100BaseT (2 Ports)
	CAN	User1 / User2
	Serial	RS232C, RS422 (RS485)
	Field Bus	CC-Link, Profibus-DP, Devicenet, Modbus
Rated Supply Voltage	AC220V ± 10%, 50 / 60 Hz	
Max. Rated Power	8 kVA (Instant Max. 30 kVA)	
Cabinet Dimension (WxDxH)	600 mm x 500 mm x 1,100 mm (Except Caster)	
Weight	150 kg (Without Transformer)	
Protection Classification	IP54	
Ambient Temperature	0 ~ 45°C	

■ Teaching Pendant Specifications

Item	Specification
Microprocessor	32 bits RISC Processor
Operating System	Windows CE
Display	7" Color TFT-LCD
Operation Mode	Menu Driven and Code Input / Touch Panel

• Easy and simple operation

- Easy/convenient programming language similar to BASIC

• Easy maintenance

- Excellent maintenance ability using on-line display function

• Advanced control technology

- Dynamic control
 - Advanced vibration suppression control
 - Extended torque-velocity control

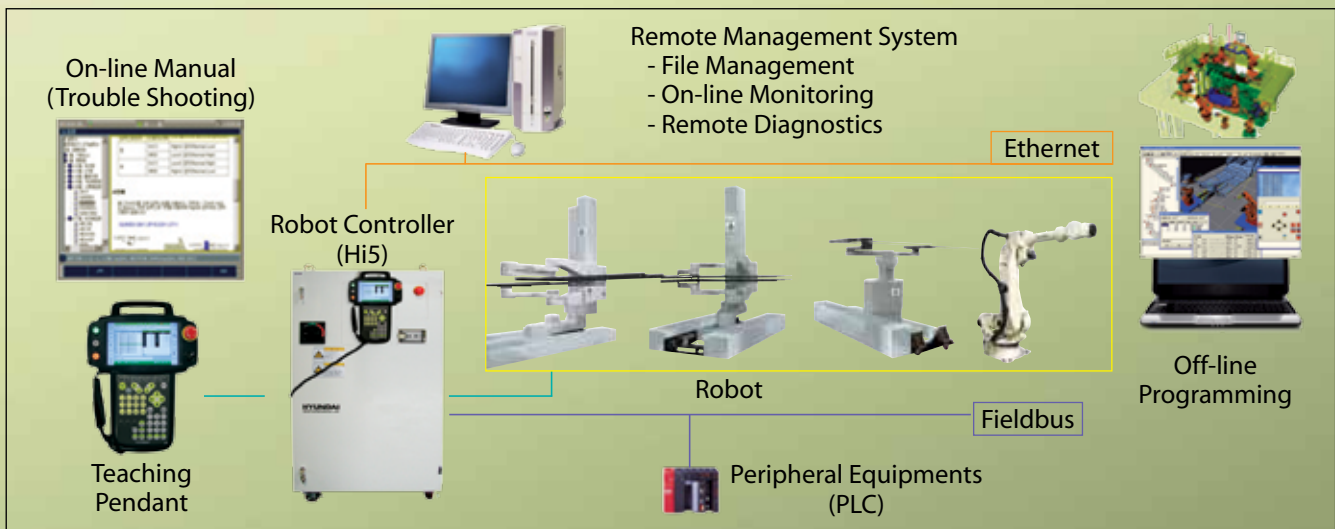
• Safety

- Compliant with ANSI/RIA15.6_1999 and CE Directives

• Compatibility and connectivity

- Embedded soft PLC
 - Fieldbus : CC-Link, Profibus-DP, Devicenet, Modbus, etc.
 - Ethernet, Serial Communication

■ System Configuration



Korea

Head Office

1, Jeonha-dong, Dong-gu, Ulsan
 TEL : 82-52-202-7901~10 FAX : 82-52-202-7900

Seoul Office

140-2, Gye-dong, Jongno-gu, Seoul
 TEL : 82-2-746-4713 FAX : 82-2-746-4720

Ansan Office

1431-2, Sa-dong, Sangnok-gu, Ansan-si,
 Gyeonggi-do
 TEL : 82-31-409-4945 FAX : 82-31-409-4946

Cheonan Office

355-15, Daga-dong, Cheonan-si,
 Chungcheongnam-do
 TEL : 82-41-576-4294 FAX : 82-41-576-4296

Gwangju Office

415-2, Nongseong-dong, Seo-gu, Gwangju
 TEL : 82-62-363-5272 / FAX : 82-62-363-5273

Daegu Office

223-5, Beomeo 2-dong, Suseong-gu, Daegu
 TEL : 82-53-746-6232~3 FAX : 82-53-746-6231

Overseas

Beijing/China

Beijing Hyundai Jingcheng No. 2. Nanli,
 Luguojiao Fengtai District
 TEL : 86 10 8321 2588 FAX : 86 10 8321 2188



<http://www.hyundai-engine.com>
 E-mail : robot@hhi.co.kr

HHI-EMD November 2010

*Materials and specifications are subject to change without notice